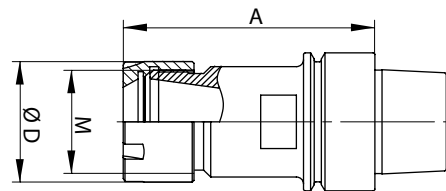


# PORTAPINZA DIN 69893 HSK TIPO E - INOX - COLLET HOLDER DIN 69893 HSK E Type - STAINLESS STEEL -

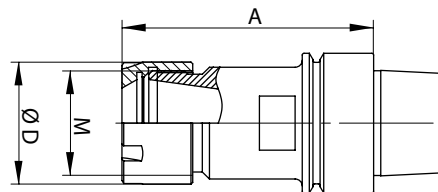
Dati tecnici ed immagini sono indicativi. Semar si riserva di apportare aggiornamenti senza obbligo di preavviso.  
Technical data and drawings are only for information purposes. Semar reserves the right to make changes without prior notice.



pg. 16-17

articolo item	descrizione - description	A	Ø D	ghiera nut
003A044	Ass Mandr HSK E32 ER20 Dx Inox + Ghiera Mini Conc Stainless Steel HSK E32 ER20 Rh + Mini Concentric Nut	49	27,5	908B014
003A021	Ass Mandr HSK E40 ER25 Dx Inox + Ghiera Mini Conc Stainless Steel Tool Holder HSK E40 ER25 Rh + Mini Concentric Nut	70,5	35	908B044
003A040	Ass Mandr HSK E50 ER25 Dx Inox + Ghiera Mini Conc Stainless Steel Tool Holder HSK E50 ER25 Rh + Mini Concentric Nut	76,5	35	908B044
003A041	Ass Mandr HSK E50 ER16 Dx Inox + Ghiera Mini Conc Stainless Steel Tool Holder HSK E50 ER16 Rh + Mini Concentric Nut	76,5	22	908B001
003A077	Ass Mandr HSK E63 ER40 Dx Inox + Ghiera Eq Conc Stainless Steel Tool Holder HSK E63 ER40 Rh + Concentric Nut	72	63	908B003

# PORTAPINZA DIN 69893 HSK TIPO E COLLET HOLDER DIN 69893 HSK E Type



pg. 16-17

articolo item	descrizione - description	A	Ø D	ghiera nut
003A045	Ass Mandr HSK E25 ER16 DX + Ghiera Speciale Conc Tool Holder HSK E25 ER16 Rh + Mini Concentric Nut	38	27	908B049
003A011	Ass Mandr HSK E32 ER20 Dx + Ghiera Mini Conc Tool Holder HSK E32 ER20 Rh + Mini Concentric Nut	49	27,5	908B014
003A020	Ass Mandr HSK E63 ER32 Dx + Ghiera Eq Conc Tool Holder HSK E63 ER32 Rh + Concentric Nut	68	50	908B002