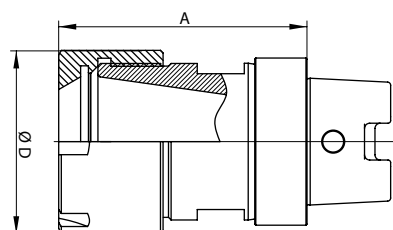


## PORTAPINZA DIN 69893 HSK TIPO C - INOX - COLLET HOLDER DIN 69893 HSK C Type - STAINLESS STEEL -



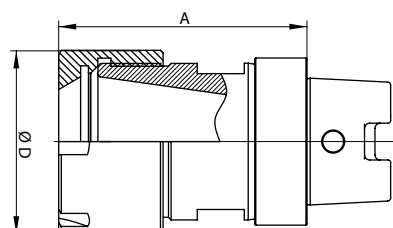
Dati tecnici ed immagini sono indicativi. Semar si riserva di apportare aggiornamenti senza obbligo di preavviso.  
Technical data and drawings are only for information purposes. Semar reserves the right to make changes without prior notice.



pg. 16-17

articolo item	descrizione - description	A	Ø D	ghiera nut
003A073	Ass Mand Inox HSK C40 ER32 Dx + Ghiera Eq Conc Stainless Steel Tool Holder HSK C32 ER25 Rh + Mini Concentric Nut	50	50	908B002
003A074	Ass Mand Inox HSK C40 ER20 Dx + Ghiera Mini Conc Stainless Steel Tool Holder HSK C32 ER25 Rh + Mini Concentric Nut	42	27,5	908B014

## PORTAPINZA DIN 69893 HSK TIPO C COLLET HOLDER DIN 69893 HSK C Type



pg. 16-17

articolo item	descrizione - description	A	Ø D	ghiera nut
003A047	Ass Mandr HSK C32 ER25 Dx + Ghiera Mini Conc Tool Holder HSK C32 ER25 Rh + Mini Concentric Nut	47,5	35	908B044
003A061	Ass Mandr HSK C40 ER25 Dx + Ghiera Mini Conc Tool Holder HSK C32 ER25 Rh + Mini Concentric Nut	47,5	35	908B044
003A067	Ass Mand HSK C40 ER32 Dx + Ghiera Eq Conc Tool Holder HSK C32 ER25 Rh + Mini Concentric Nut	50	50	908B002
003A068	Ass Mand HSK C40 ER20 Dx + Ghiera Mini Conc Tool Holder HSK C32 ER25 Rh + Mini Concentric Nut	42	27,5	908B014