

PINZE DI SERRAGGIO UTENSILE DIN 6499/B

DIN 6499/B COLLETS

Dati tecnici ed immagini sono indicativi. Semar si riserva di apportare aggiornamenti senza obbligo di preavviso.
 Technical data and drawings are only for information purposes. Semar reserves the right to make changes without prior notice.



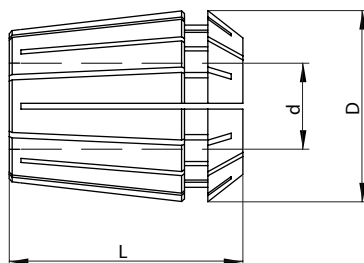
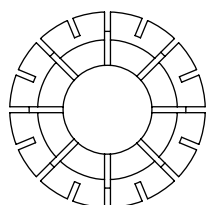
d	ER11			ER16			ER20		
	Codice Code	D	L	Codice Code	D	L	Codice Code	D	L
1,0-0,5				CO00000086	17,5	27	CO00000104	21	31
1,5-1,0				CO00000087	17,5	27	CO00000105	21	31
2,0-1,5				CO00000088	17,5	27	CO00000106	21	31
2,5-2,0				CO00000089	17,5	27	CO00000108	21	31
3,0-2,5	CO00000139	11,5	18	CO00000090	17,5	27	CO00000107	21	31
3,5-3,0	CO00000129	11,5	18	CO00000092	17,5	27	CO00000109	21	31
4,0-3,5	CO00000140	11,5	18	CO00000091	17,5	27	CO00000110	21	31
4,5-4,0	CO00000130	11,5	18	CO00000093	17,5	27	CO00000111	21	31
5,0-4,5	CO00000138	11,5	18	CO00000094	17,5	27	CO00000112	21	31
5,5-5,0				CO00000095	17,5	27	CO00000113	21	31
6,0-5,5	CO00000141	11,5	18	CO00000096	17,5	27	CO00000114	21	31
6,5-6,0	CO00000131	11,5	18	CO00000097	17,5	27	CO00000115	21	31
7,0-6,5				CO00000098	17,5	27	CO00000116	21	31
7,5-7,0				CO00000099	17,5	27	CO00000117	21	31
8,0-7,5				CO00000100	17,5	27	CO00000118	21	31
8,5-8,0				CO00000137	17,5	27	CO00000119	21	31
9,0-8,5				CO00000101	17,5	27	CO00000120	21	31
9,5-9,0				CO00000102	17,5	27	CO00000121	21	31
10,0-9,5				CO00000103	17,5	27	CO00000122	21	31
10,5-10,0							CO00000123	21	31
11,0-10,5							CO00000124	21	31
11,5-11,0							CO00000125	21	31
12,0-11,5							CO00000126	21	31
12,5-12,0							CO00000127	21	31
13,0-12,5							CO00000128	21	31

tutte le misure sono disponibili in versione ultra precise
 all dimensions are also available in ultra precise version

PINZE DI SERRAGGIO UTENSILE DIN 6499/B

DIN 6499/B COLLETS

Dati tecnici ed immagini sono indicativi. Semar si riserva di apportare aggiornamenti senza obbligo di preavviso.
 Technical data and drawings are only for information purposes. Semar reserves the right to make changes without prior notice.



d	ER25			ER32			ER40		
	Codice Code	D	L	Codice Code	D	L	Codice Code	D	L
1/4"				CO00000133	33	40			
1/2"				CO00000132	33	40	CO00000460	41	46
3/8"	CO00000143	26	35	CO00000134	33	40			
1-0,5	CO00000420	26	35						
2-1	CO00000145	26	35	CO00000144	33	40			
3-2	CO00000046	26	35	CO00000040	33	40	CO00000142	41	46
4-3	CO00000047	26	35	CO00000041	33	40	CO00000064	41	46
5-4	CO00000048	26	35	CO00000035	33	40	CO00000065	41	46
6-5	CO00000037	26	35	CO00000043	33	40	CO00000066	41	46
7-6	CO00000049	26	35	CO00000056	33	40	CO00000067	41	46
8-7	CO00000038	26	35	CO00000044	33	40	CO00000068	41	46
9-8	CO00000050	26	35	CO00000057	33	40	CO00000069	41	46
10-9	CO00000036	26	35	CO00000045	33	40	CO00000070	41	46
11-10	CO00000051	26	35	CO00000058	33	40	CO00000071	41	46
12-11	CO00000039	26	35	CO00000034	33	40	CO00000072	41	46
13-12	CO00000052	26	35	CO00000042	33	40	CO00000073	41	46
14-13	CO00000053	26	35	CO00000421	33	40	CO00000074	41	46
15-14	CO00000054	26	35	CO00000059	33	40	CO00000075	41	46
16-15	CO00000055	26	35	CO00000060	33	40	CO00000076	41	46
17-16				CO00000061	33	40	CO00000077	41	46
18-17				CO00000062	33	40	CO00000078	41	46
19-18				CO00000063	33	40	CO00000079	41	46
20-19	CO00000426	26	35	CO00000032	33	40	CO00000080	41	46
21-20							CO00000081	41	46
22-21							CO00000082	41	46
23-22							CO00000083	41	46
24-23							CO00000084	41	46
25-24							CO00000085	41	46
26-25							CO00000033	41	46
28-27							CO00000422	41	46
30-29							CO00000388	41	46