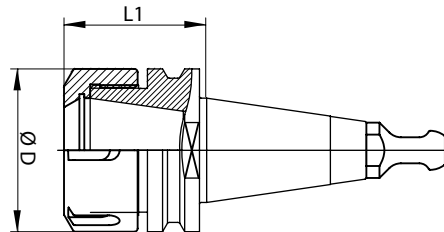
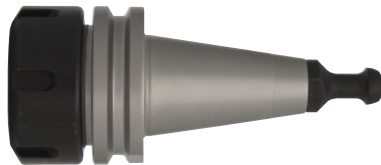


Dati tecnici ed immagini sono indicativi. Semar si riserva di apportare aggiornamenti senza obbligo di preavviso.
Technical data and drawings are only for information purposes. Semar reserves the right to make changes without prior notice.



articolo item	descrizione - description	L1	D
004A003	Ass Mandr ISO30 Inox ER32 Dx + Ghiera Eq Conc Stainless Steel Tool Holder ISO30 ER32 Rh + Balanced Nut	44	50
004A008	Ass Mandr ISO30 Inox ER32 Sx + Ghiera Eq Conc Stainless Steel Tool Holder ISO30 ER32 Lh + Balanced Nut	44	50
004A004	Ass Mandr ISO30 Inox ER32 Dx + Ghiera a Sfere Stainless Steel Tool Holder ISO30 ER32 Rh + Ball Bearing Nut	44	50
004A009	Ass Mandr ISO30 Inox ER32 Sx + Ghiera a Sfere Stainless Steel Tool Holder ISO30 ER32 Lh + Ball Bearing Nut	44	50
004A010	Ass Mandr ISO30 Inox ER40 Dx + Ghiera Eq Conc Stainless Steel Tool Holder ISO30 ER40 Rh + Balanced Nut	49	63
004A033	Ass Mandr ISO30 Inox ER40 Sx + Ghiera Eq Conc Stainless Steel Tool Holder ISO30 ER40 Lh + Balanced Nut	49	63
004A011	Ass Mandr ISO30 Inox ER40 Dx + Ghiera a Sfere Stainless Steel Tool Holder ISO30 ER40 Rh + Ball Bearing Nut	52	63
004A007	Ass Mandr ISO30 Inox ER25 Dx + Ghiera Mini Stainless Steel Tool Holder ISO30 ER25 Rh + Mini Nut	46	35
004A016	Ass Mandr ISO30 Inox ER25 Sx + Ghiera Mini Stainless Steel Tool Holder ISO30 ER25 Lh + Mini Nut	46	35
004A005	Ass Mandr ISO30 Inox ER32 Dx + Ghiera Eq Conc (tipo Tommotek) Stainless Steel Tool Holder ISO30 ER32 Rh + Balanced Nut (Tommotek type)	70	50
004A014	Ass Mandr ISO30 Inox L109 ER32 Dx + Ghiera a Sfere Stainless Steel Tool Holder ISO30 L109 ER32 Rh + Ball Bearing Nut	86	50
004A029	Ass Mandr ISO30 Inox ER32 Dx L102.6 + Ghiera Eq Conc Stainless Steel Tool Holder ISO30 ER32 Rh L102.6 + Balanced Nut	62	50
004A036	Ass Mandr ISO30 Inox ER32 Dx + Codolo DIN69872 + Ghiera Ecc Bil Stainless Steel Tool Holder ISO30 ER32 Rh + Pull Stud DIN69872 + Eccentric Bal Nut	58	50

ghiera nut	tirante pull stud
908B002	100B001
908B011	100B001
908B007	100B001
908B006	100B001
908B003	100B001
908B012	100B001
908B008	100B001
908B004	100B001
908B017	100B001
908B013	100B001
908B007	100B001
908B002	100B001
908B034	100B010